

*LPR for Windows
95/98/Me/2000/XP
TCP/IP Printing
User's Guide*

Rev. 03 (November, 2001)

Copyright Statement

Copyright ©1997

No part of this publication may be reproduced in any form or by any means or used to make any derivative such as translation, transformation, or adaptation without permission from the authors, as stipulated by the United States Copyright Act of 1976.

Trademarks

All trademarks are the property of their respective owners.

Setting up Windows 95/98/Me TCP/IP Printing

The Print Server can provide print services to TCP/IP networks using the `lpr/lpd` network printing protocol. Most UNIX systems are capable of supporting `lpd`, as is Windows NT/2000.

This LPR for TCP/IP Printing client gives Windows 95/98/Me workstations the ability to print using the `lpr/lpd` printing protocol. Though it is possible to print to Print Servers from Windows 95/98/Me, this capability is useful if primarily administer your network from UNIX systems, or if you want to print from workstations that are only accessible through IP routing.

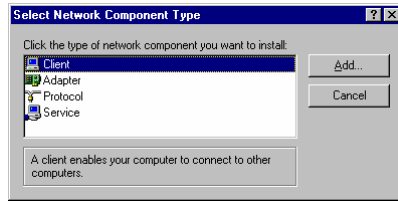
Installing the LPR for TCP/IP Printing Client

Before your Windows 95/98/Me workstation can print using the `lpr` protocol, you will need to install the client program, as follows:

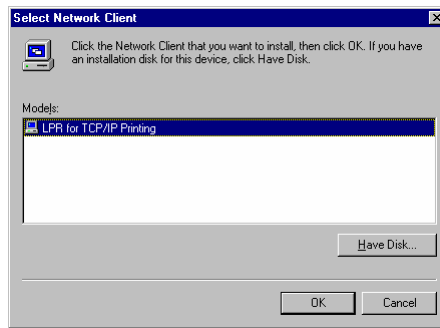
1. Make sure that you have installed the TCP/IP protocol, and have properly configured the Windows 95/98/Me TCP/IP settings. You can install the protocol from the Network control panel if necessary.
2. From the **Start** menu, choose the **Settings** submenu, then the **Control Panel** item within it. Windows will display the Control Panel folder.
3. Double-click on the Network icon in the Control Panel folder.



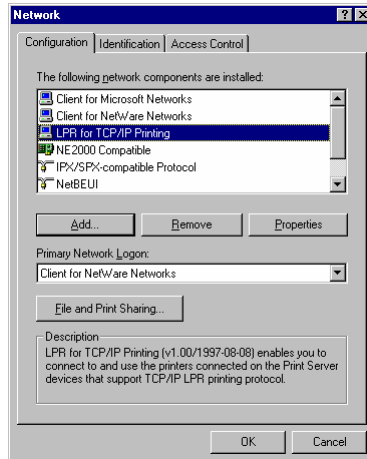
4. Click on the **Add...** button on the **Configuration** tab.
5. Windows will ask for the type of component to add. Select Client and click **Add...** to continue.



6. When Windows asks you to select a network client, click the **Have Disk...** button.
7. Insert the Print Server installation CD in your computer's CD-ROM, enter the proper pathname (for example, D:\lpr), and click **OK**.
8. Select the LPR for TCP/IP Printing client and click **OK**.



9. Windows will copy the necessary files, and return to the Network dialog. Click **OK** to let Windows restart.



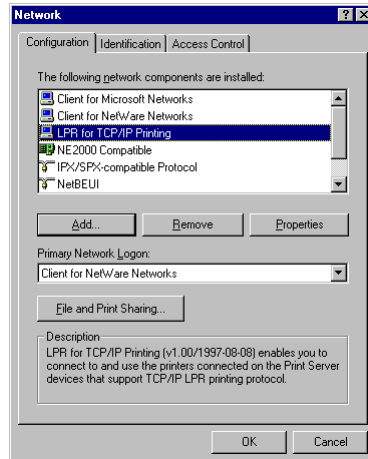
Adding LPR Printer Ports

Once you have installed the client, and have enabled TCP/IP printing for the Print Servers, then you need to add a printer port for each printer you will be printing to using the `lpr` / `lpd` protocol. To add a printer port,

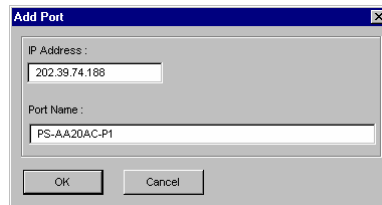
1. From the **Start** menu, choose the **Settings** submenu, then the **Control Panel** item within it. Windows will display the Control Panel folder.
2. Double-click on the **Network** icon in the Control Panel folder.



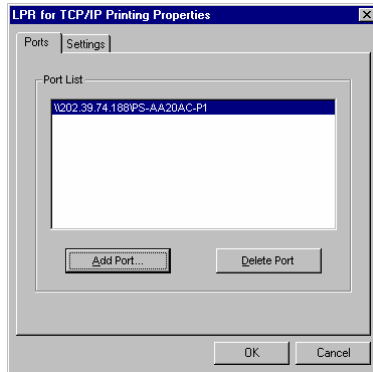
3. Choose the LPR for TCP/IP Printing client and click the **Properties** button.



4. Click the **Add Port...** button to add a new lpd-accessible printer port.
5. Enter the IP address of the Print Server and the name of the printer port that you will be printing to, then press OK.



6. Click **OK** to leave the LPR for TCP/IP Printing Properties window.



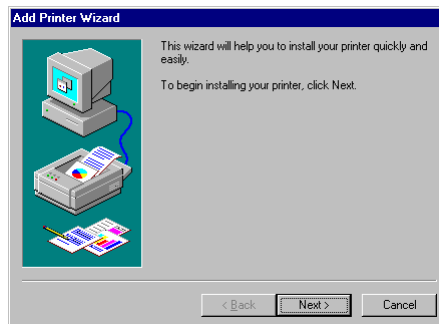
Printing from Windows 95/98/Me

After you have added the necessary printer ports, you can add a printer device for printing to the port. To enable printing to an LPR-accessible printer port from Windows 95/98/Me,

1. From the Start menu, choose the Settings submenu, then the Printers item within it. Windows will display the Printers folder.
2. Double-click on the Add Printer icon in the Printers folder.

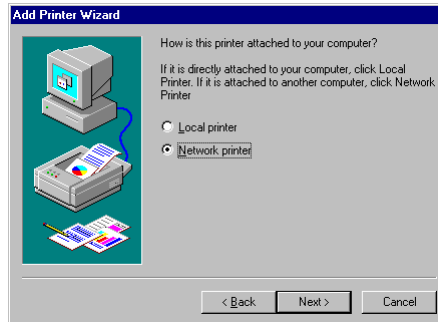


Windows will start the Add Printer Wizard.

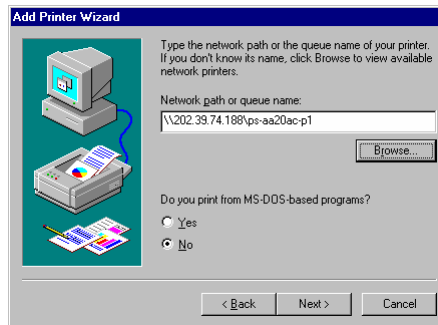


Click the **Next >** button to continue to the next screen.

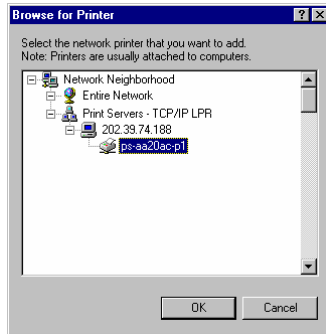
3. Choose the **Network Printer** selection and click the **Next >** button to continue.



4. Enter the name of the port, as displayed in the LPR for TCP/IP Printing Port List.



Alternatively, you can click **Browse...** and locate the printer port. TCP/IP printing ports are located under the Entire Network icon, within the Print Servers - TCP/IP LPR icon.



Press **OK** when you have located the proper printer port.

Click **Next >** to continue to the next step.

5. At this point Windows will ask you to choose the correct printer driver for the printer. Choose your printer's make and model from the list, or use the driver disk included with the printer. When you have chosen the correct printer, click **Next >** to continue.
6. Windows will then ask for a name for the new printer, and ask whether or not you want to set the printer as the Windows default printer. Click **Finish** (or **Next >**) to continue.



7. Windows may ask you whether or not you wish to print a test page to make sure that the printer will work correctly. When the test page is done printing, you will be asked whether or not the test page printed.

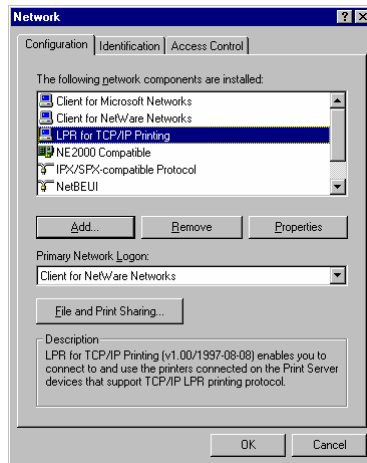
Setting TCP/IP Printing Settings

The `lpr` client's Properties dialog allows you to change several of the client's settings. To change these settings,

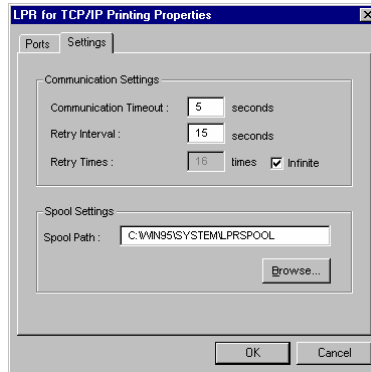
1. From the **Start** menu, choose the **Settings** submenu, then the **Control Panel** item within it. Windows will display the Control Panel folder.
2. Double-click on the **Network** icon in the Control Panel folder.



3. Choose the LPR for TCP/IP Printing client and click the **Properties** button.



4. Click on the Settings tab to access the `lpr` client settings. Change the settings as necessary, and press **OK** to let the changes take effect.



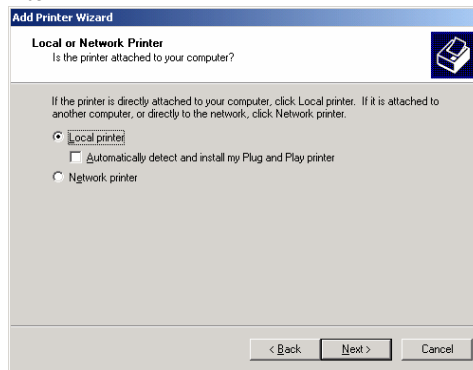
The parameters are as follows:

- ◆ **Communication Timeout** Determines how long, in seconds, the system will wait before determining that it has lost connection with `lpr` / `lpd` print servers.
- ◆ **Retry Interval** Determines how long, in seconds, the system will wait before retrying a lost connection.
- ◆ **Retry Times** Determines how many times the system will retry a lost connection with an `lpr` / `lpd` print server. If **Infinite** is checked, it will retry indefinitely.
- ◆ **Spool Path** Gives the directory path where the system will temporarily store `lpr` / `lpd` print server job files.

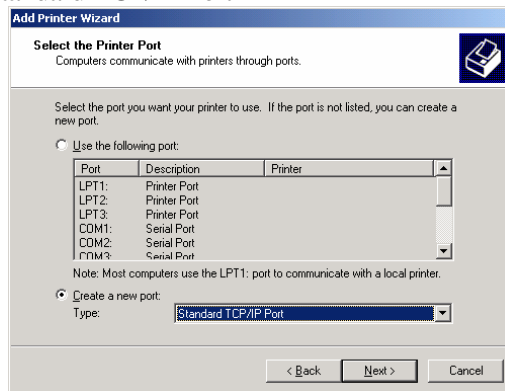
Setting up Windows 2000 TCP/IP Printing

Following is the correct procedure for setting up TCP/IP LPR printing under Windows 2000.

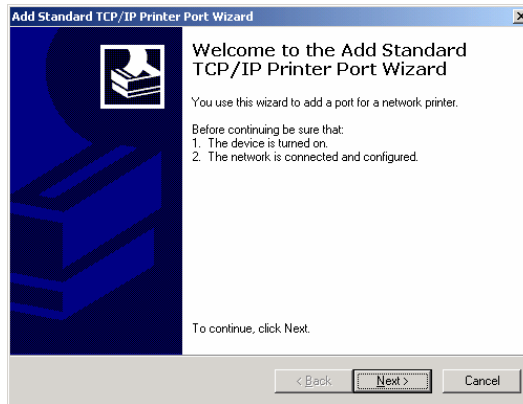
Click Start > Settings > Printers.
Double Click "Add Printer"
Select "Local Printer"



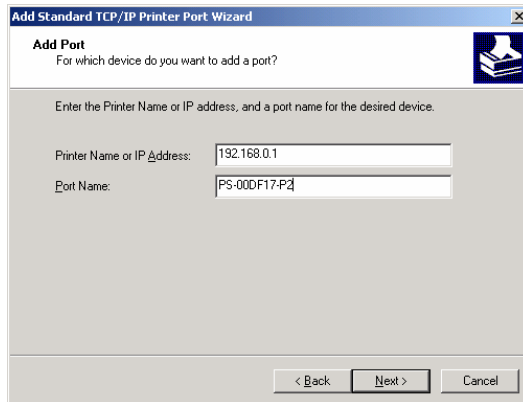
Create a new "Standard TCP/IP Port"



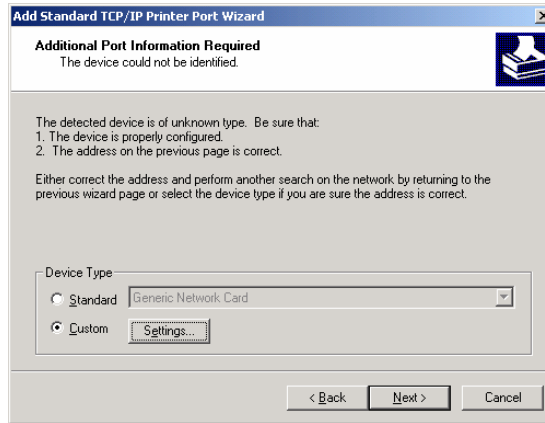
Click “Next”



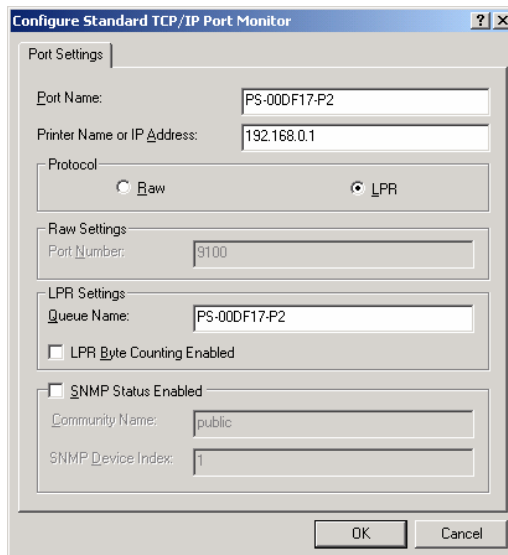
Input the IP Address of the Print Server, and the Port name of the Port that will be printed to, then click “Next”.



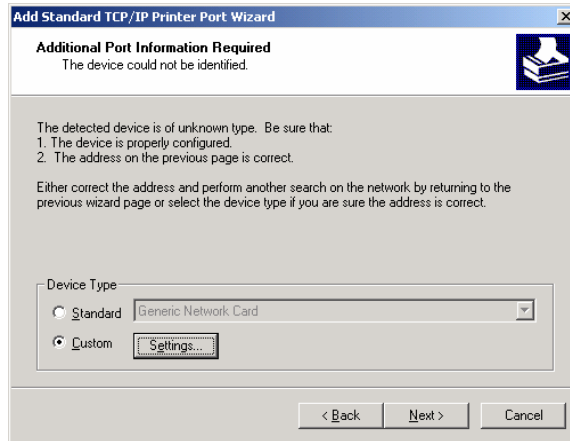
Select “Custom”, and click “Settings”.



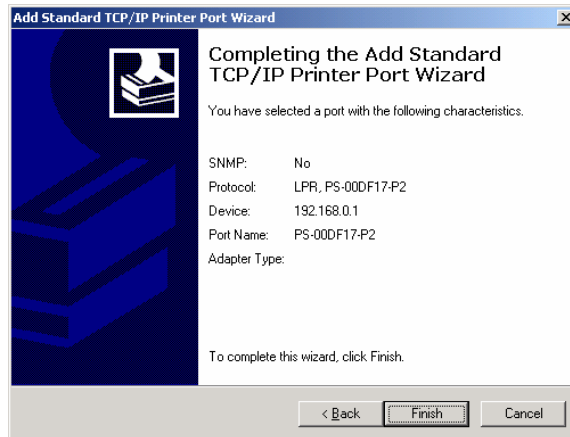
Select “LPR”, and put the Port name in the field labeled “Queue Name”. Then Click “OK”.



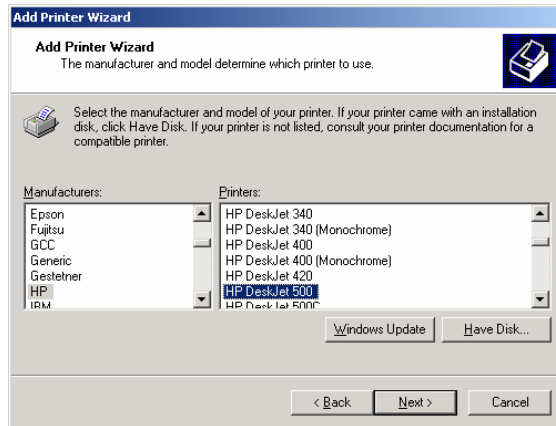
Click “Next”.



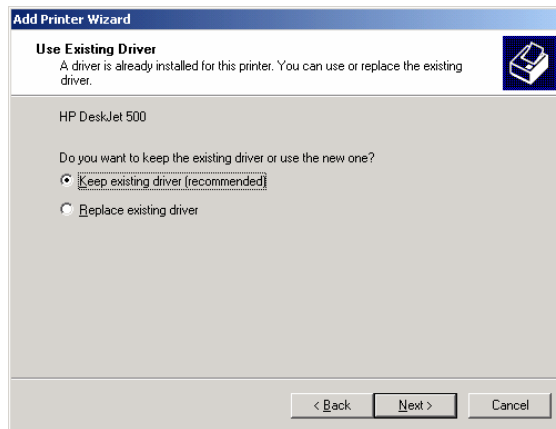
Click “Finish”



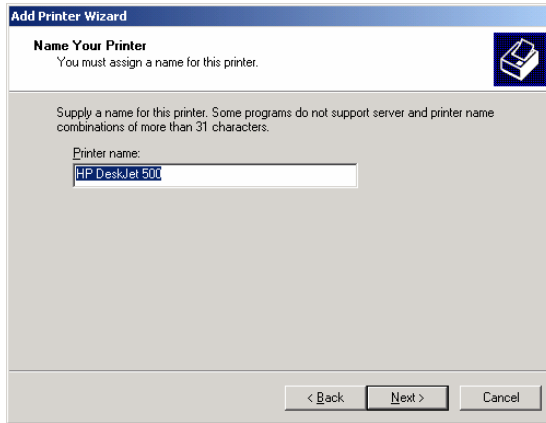
The Printer Install Wizard will now prompt for drivers. Select the correct Make and Model, or click “Have Disk”, to provide the Manufacturer’s Driver Disk.



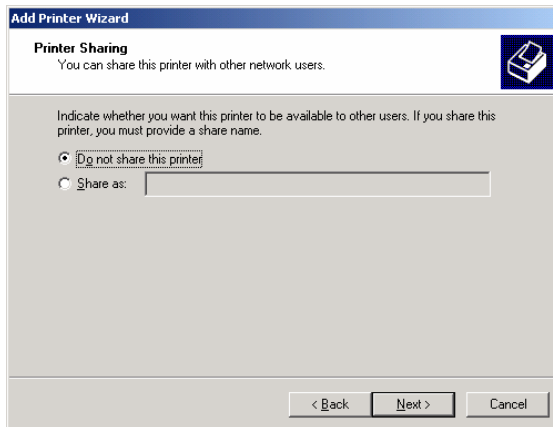
Click “Next”.



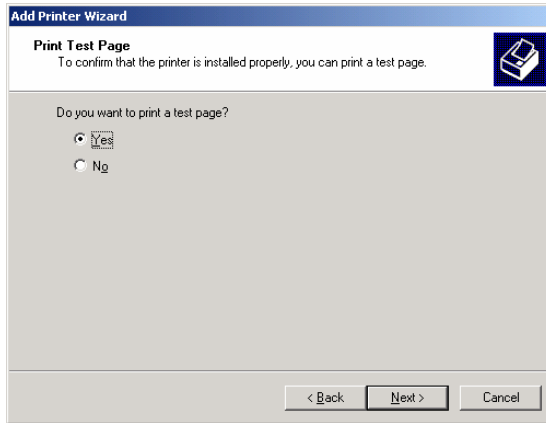
Select a “Printer Name”.



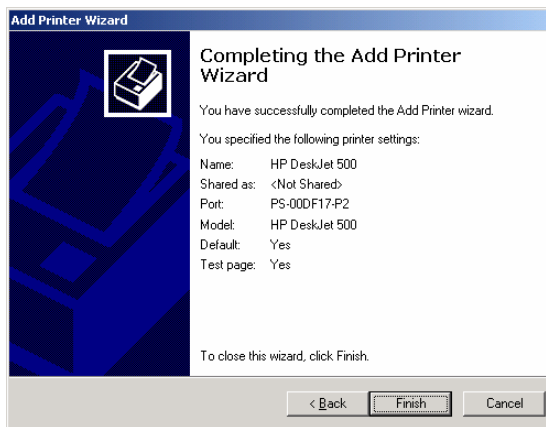
Sharing can be enabled here.



Also, a Test Page can be printed to confirm proper configuration.



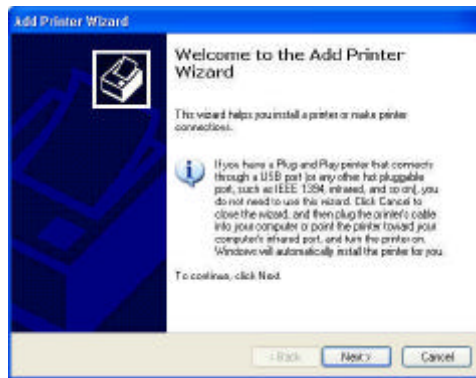
When the Test Page has printed, click “Finish” to complete the installation.



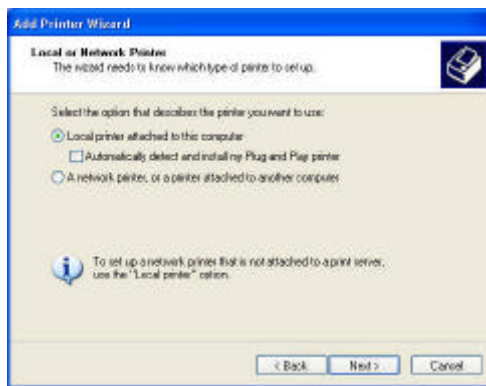
Setting up Windows XP TCP/IP Printing

Following is the correct procedure for setting up TCP/IP LPR printing under Windows 2000.

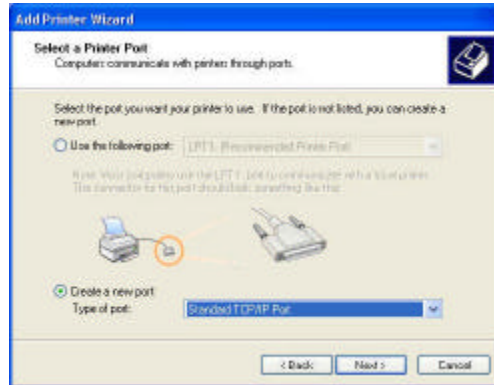
Click Start > Printer and Faxes
Double Click “Add a Printer”
Click “Next”



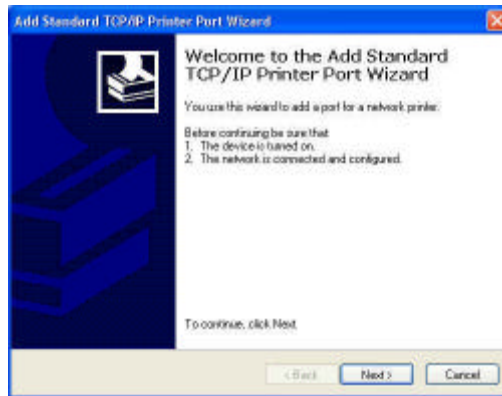
Select “Local Printer”



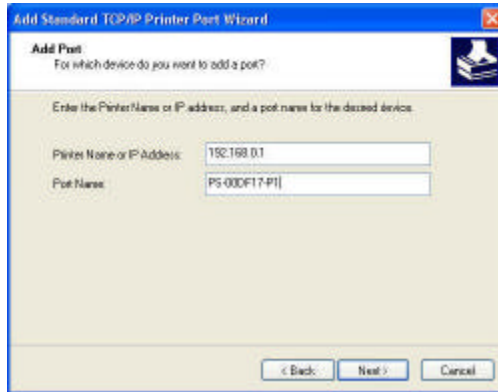
Create a new “Standard TCP/IP Port”



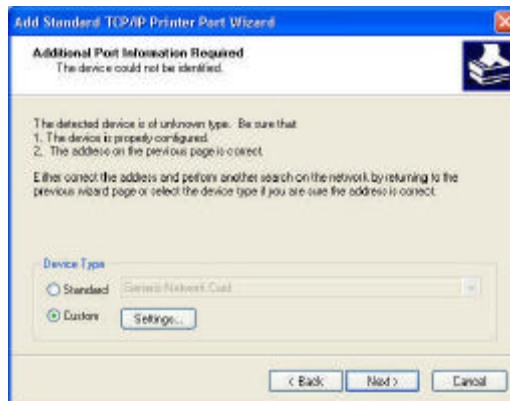
Click “Next”



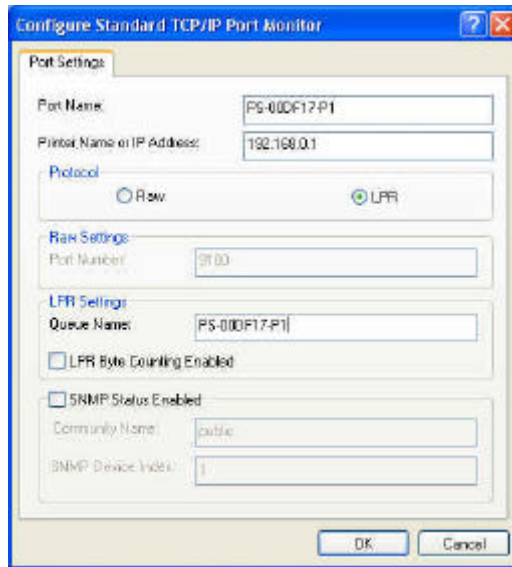
Input the IP Address of the Print Server, and the Port name of the Port that will be printed to, then click “Next”.



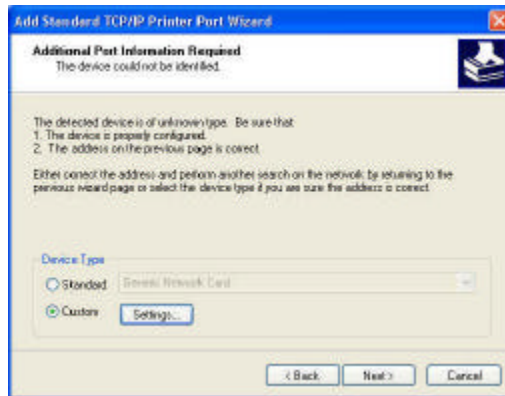
Select “Custom”, and click “Settings”.



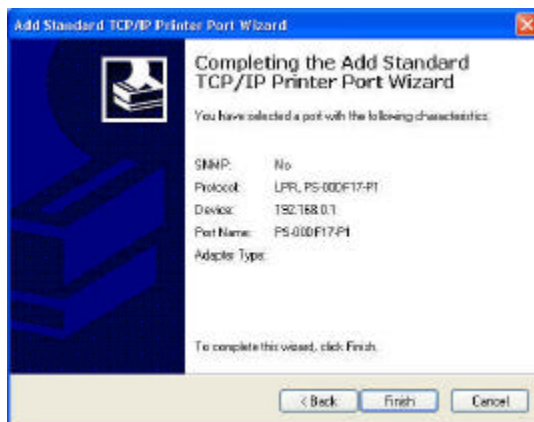
Select “LPR”, and put the Port name in the field labeled “Queue Name”. Then Click “OK”.



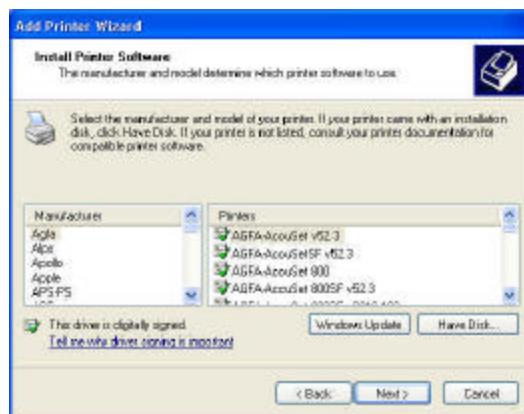
Click “Next”.



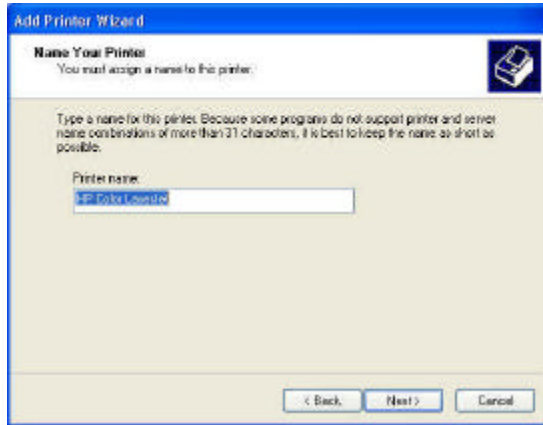
Click “Finish”



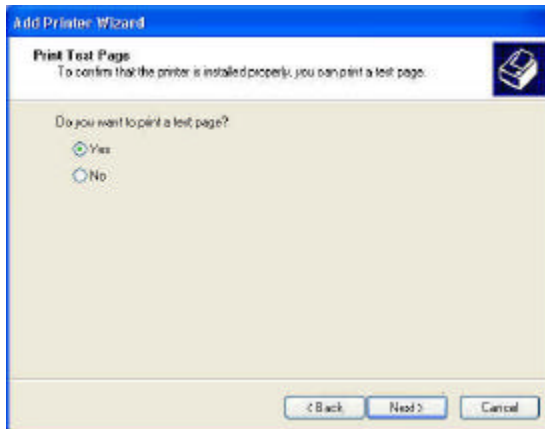
The Printer Install Wizard will now prompt for drivers. Select the correct Make and Model, or click “Have Disk”, to provide the Manufacturer’s Driver Disk.
Click “Next”.



Select a “Printer Name”.



A Test Page can be printed to confirm proper configuration.



When the Test Page has printed, click “Finish” to complete the installation.

